

THE BULLETIN OF THE
NATIVE PLANT SOCIETY OF OREGON

• OBJECTIVE •

To increase the knowledge of members and public
in identification and conservation of the native
plants of the Pacific Northwest.

VOLUME XV No. 11

NOVEMBER 1982

RENEWAL TIME! VOTING TIME!

ENCLOSED WITH THIS MAILING YOU WILL FIND YOUR RENEWAL FORM, NOTE THE INCREASE IN DUES, UNFORTUNATELY A NECESSARY ADJUSTMENT. PLEASE SEND COMPLETED FORM (TYPED OR PRINTED LEGIBLY) AND REMITTANCE TO MARY FALCONER, MEMBERSHIP CHAIR, 1920 ENGEL AVE NW, SALEM OR, 97304. THANK YOU, PLEASE RENEW ON TIME (JANUARY 1, 1983). IF DUES ARE NOT RECEIVED BY 1 MARCH 1983, WE WILL REGRETFULLY ASSUME YOU NO LONGER WISH TO BE A MEMBER OF THE NPSO, AND WE WILL DISCONTINUE SENDING YOU THE NPSO BULLETIN.

NPSO BY-LAWS CHANGING. TOWARDS THE BACK OF YOUR BULLETIN YOU WILL FIND A LIST OF THE CHANGES APPROVED BY THE NPSO BOARD. BEFORE THESE CHANGES ARE ADOPTED, THEY MUST BE VOTED ON AND PASSED BY THE MEMBERSHIP'S MAJORITY VOTE. PLEASE FILL OUT YOUR BALLOT (FOUND ON THE LAST PAGE) OR A COPY OF THIS BALLOT AND RETURN TO YOUR CHAPTER PRESIDENT AT THE NEXT SCHEDULED MEETING. BALLOTS WILL THEN BE SENT COLLECTIVELY TO RHODA LOVE, NPSO PRESIDENT, 393 FUL VUE DR., EUGENE OR 97405. IF YOU CANNOT MAKE THE NEXT CHAPTER MEETING, SEND BALLOT DIRECTLY TO RHODA. ALL BALLOTS MUST BE RECEIVED BY RHODA BY 15 DEC.

JEAN DAVIS MEMORIAL AWARD: SCHOLARSHIPS

THE NPSO WILL BE AWARDING A SCHOLARSHIP TO A WORTHY STUDENT IN AN OREGON COLLEGE, WITH THEIR MAJOR STUDY IN PLANT SYSTEMATICS OR PLANT ECOLOGY. THE SCHOLARSHIP IS IN THE AMOUNT OF \$1,000, AND IS TO BE USED TOWARD THE STUDENT'S TUITION WITHIN THE FOLLOWING ACADEMIC YEAR. DEADLINE FOR APPLICATIONS IS APRIL 1, 1983. THE AWARD WILL BE MADE BY MAY 1, 1983. FOR MORE INFORMATION AND A COMPLETE SET OF APPLICATION RULES, PLEASE SEND A SELF-ADDRESSED, STAMPED ENVELOPE TO: MARY FALCONER, 1920 ENGEL AVE NW, SALEM OR, 97304.

NEW EDITOR NEEDED

I will be resigning as NPSO editor as of June, 1983. I would like to encourage anyone interested in this volunteer position to come forward. The editor's job for the NPSO is very rewarding. You are exposed to a variety of conservation and other literature, meet outstanding plant-loving people, and gain useful experience. The NPSO needs an energetic, creative person(s) to fill this position. If you are curious, I would be very happy to answer any questions. Call me, Linda Vorobik, at 686-3033 (work), or 689-9256 (home), or write me at NPSO, Department of Biology, University of Oregon, Eugene OR 97403.

HIGHLIGHTS OF THE SEPTEMBER 25 BOARD MEETING OF
THE NATIVE PLANT SOCIETY OF OREGON

Rhoda Love, Pres., called the meeting to order in the Gold Room of the Mallory Motor Hotel in Portland, Oregon.

Present were: Rhoda Love, Paula Vincent, Secretary, Mary Falconer, Veva Stansell, Wilbur Bluhm, Florence Ebeling, Harry Oswald, Linda Johnson, Stuart Garrett, Virginia Diegel, Darlene Southworth, and George Shoppert.

The meeting opened with brief chapter reports from 6 of the 8 chapters. A financial report was circulated in the absence of Treasurer Nadine Smith who was still at work at Crater Lake Park. Mary Falconer, Membership Chairman, reported that we have approximately 551 memberships statewide. Paula Vincent reported that she will have an interim membership roster to send to Board members this Fall, and that a roster for all members will be ready in early Spring.

Among other matters the Board took action on the following: They accepted a new membership form prepared by Mary Falconer. One-quarter memberships (\$2.50) will be available for those members joining during the months of September and October. The new membership forms -- with the new, higher dues -- are included in this (November) Bulletin.

We will investigate the possibility of investing both our checking and savings accounts at a more advantageous interest rate. Veva Stansell will obtain information from the California Native Plant Society in line with our Board's interest in producing a poster featuring Oregon Rare and Endangered Plants.

The Board approved the revised state by-laws prepared by Mariana Bornholdt and her committee. Revisions and amendments will be published in the Bulletin for approval by the membership.

Darlene Southworth, Siskiyou Chapter, asked if the Board would permit the Siskiyou Chapter to make its mailing list available to an environmental political candidate. After rather lengthy and somewhat heated discussion, the Board members present voted 7-3 against the proposal.

Rhoda Love, President, asked each chapter to appoint a Legislative committee chairman so that a statewide network can be formed to rally support for a possible NPSO-sponsored bill for the protection of native plants during the 1983 session of the Oregon Legislature.

continued on next page

Veva Stansell was appointed Chairman of the Nominating Committee for the 1983 election of Board members.

Linda Vorobik of Eugene, our Bulletin editor, will be resigning next June, 1983. Each chapter was asked to search for a possible successor to Linda. The new Bulletin editor should be appointed in time to "learn the ropes" from Linda before her resignation.

Emerald Chapter, Eugene, will host our 1983 Annual Meeting.

The next Board meeting will be on Saturday, January 22, in Salem.

Rhoda Love
President

GOOD NEWS FOR RARE PLANTS: PROTECTION ACHIEVED!

ON October 6, 1982, the Willow Creek Stewardship Committee met on the University of Oregon campus. It marked the culmination of the most significant effort to protect rare plant habitat in Oregon, following upon the signing of a 10-year lease by private landowners to create the Willow Creek Preserve in cooperation with local planners, Lane County, the city of Eugene, and The Nature Conservancy.

The story begins with Steve Gordon, a planner for Lane County, who noticed the potential wildlife and wetland values of the site several years ago. A birdwatcher, he alerted the local Audubon to the spot and they began studying the area. Sydney Herbert of Lane County Audubon Society invited some botanists along on one of their trips, saying, "Find some rare plants!" Rare plants usually do not appear on command, but on this occasion we were able to find Aster curtus, a grassland plant not seen since the 1930's and presumed likely extinct (extirpated). This species became the cause celebre of the Willow Creek basin; despite the fact it has since been found in Washington and British Columbia there remains no other site for it in Oregon. The next spring I found Lomatium bradshawii there, and Jimmy Kagan (now of The Nature Conservancy) found Erigeron decumbens at Willow Creek the following year when doing research for his master's thesis on the Lomatium. Intensity of concern developed as we realized that the site was a truly valuable and unique remnant of Willamette Valley grassland, the last stand for the most recently found rare plants.

The rest of the story is boring for those who delight only in discoveries of unusual plants, but is the critical part for those hope our grandchildren will also be able to see these plants. The NPSO Bulletin is not the place for the detailed planning negotiations; let me offer to supply this information (hopefully from Steve Gordon's final report) to those interested in the process. What you should know is that the private landowners (and it is particularly significant that more than one was involved) were able to retain their investment potential by process known as Planned Unit Development. Ken Margolis of The Nature Conservancy negotiated the details of the Preserve lease, while both city and county planners worked on density transfers which made it possible to relieve development pressure on the rare plant habitat. The long-term prospect for proper conservation management seems good.

The lessons to be learned from this are several. The first is that land-use planning works; this would not have happened without LCDC. We all need to thank the landowners, city and county officials who were willing to do the thinking and take the actions which benefit us all. The second lesson is that we can do it ourselves. The Endangered Species Act was

important in that it helped to emphasize that the plants being championed were really significant, but other than that the agency charged with managing the Act was ineffective in contributing to a solution. Of course, a federal agency has little control over private land, but it was particularly frustrating that the agency was unable to formally list the species of Willow Creek despite the fact that we had clearly demonstrated the imminent threats to endangerment were far greater than to the two Oregon species which did get listed in the past nine years. The final point, then, is that we need our own state Endangered Species Act which permits us to work effectively with private as well as public landowners in planning for the conservation of habitat for our rare plants.

David H. Wagner
Eugene

1982 OREGON RARE AND ENDANGERED
PLANT CONFERENCE

NOVEMBER 6&7
WILKINSON HALL AUDITORIUM
OREGON STATE UNIVERSITY, CORVALLIS, OREGON

This conference is being sponsored by the Oregon Rare and Endangered Plant Project, the Native Plant Society of Oregon, and the Oregon State University Agricultural Extension Service and Department of Botany. This conference will concentrate on the species on the 1982 Review List sent out to participating botanists in March of 1982. NPSO members who did not receive this list should enquire of their chapter president, each of whom was sent a list. The work sessions are designed for those botanists who have been working in the field; other interested persons are invited to attend but are requested to be quiet spectators. The evening "pot luck slideshow" should be a pleasureable event for all. Registration for the conference is \$2.00.

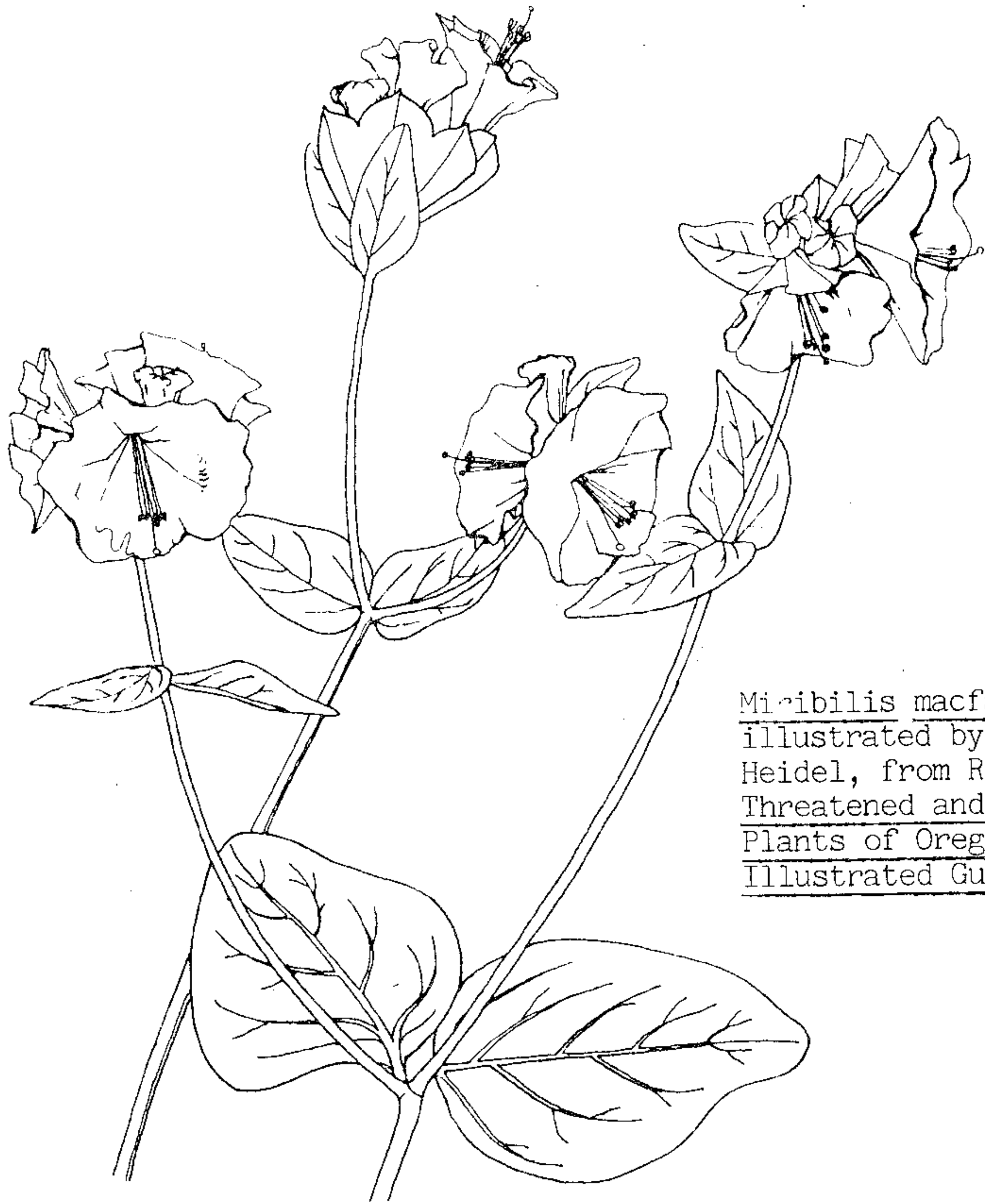
SATURDAY, NOVEMBER 6, 1982

- 8:00- 8:30 Registration
- 8:35- 8:45 Opening Remarks
- 8:45-11:45 Morning Session--
First half of 1982 Review List
- 11:45- 1:00 Lunch at the restaurant of your choice
- 1:00- 4:30 Afternoon Session--
Second half of 1982 Review List
- 4:30- 7:30 Free time/Dinner
- 7:30- 9:30 "Potluck" slide show of R/E plants
(bring slides to share)

SUNDAY, NOVEMBER 7, 1982

- 8:00-11:45 Morning Session--
Additions to Main List
Deletions from Main List
- 11:45- 1:00 Lunch
- 1:00- 4:00 Afternoon Session--
Species not on Conference Checklist,
which participants would like to discuss

NEWS ON EASTERN OREGON'S ENDANGERED MIRABILIS



Mirabilis macfarlanei
 illustrated by Bonnie
 Heidel, from R. Meinke,
Threatened and Endangered
Plants of Oregon: An
Illustrated Guide

An agency review draft of the Macfarlane's Four O'Clock Recovery Plan has been completed. This plant is a member of the Nyctaginaceae or "four o'clock" family. In Latin, its generic name Mirabilis means wondrous. This species, M. macfarlanei, was named for Ed Macfarlane, a boatman on the Sjake River who pointed out the plant to Rollins and Constance in 1936. These botanists described the species later that year. In 1947, Davis, an Idaho botanist, discovered it on the Salmon River in Idaho. Later fruitless searches for Mirabilis led botanists to consider it possibly extinct. It wasn't until 1978 that a small colony was noted in Hell's Canyon Recreation Area in Oregon. It has since been found in three additional localities, including what is thought to be the type locality. The most recent discovery, the Long Gulch site in Idaho, consists of several hundred plants. In October, 1979, Mirabilis macfarlanei was listed as an Endangered species..

[from Endangered Species Technical Bulletin,
 Volume VII No. 9, September, 1982]

FEDERAL ACT TO PROTECT ENDANGERED SPECIES BE-
COMES LAW--CAN WE PASS AN OREGON LAW IN 1983?

The following piece appeared in my hometown newspaper on October 14, 1982:

"A bill to extend the Endangered Species Act for 3 years and streamline the procedures for listing endangered species was signed today by President Reagan. The bill authorizes \$39 million for administration of the act during the next 3 years. The final version of the bill won easy approval in both the Senate and House despite earlier controversies over the law. The bill streamlines the process for placing endangered and threatened species on a special government list that gives them certain protections. A decision must be made within one year of the species being proposed for listing. The decision must be based solely on biological and commercial criteria, not on economic costs."

We in NPSO can well be proud of the work we did to assist passage of the Federal Bill. Now we must work to intruduce and pass legislation here in Oregon to protect our endangered floras. I have asked all chapter presidents to ask for volunteers for our 1983 Legislative Committee. I hope we can form a strong statewide network to contact legislators and show support for our bill.

Please write to me if you are willing to help in any way--telephoning, writing letters, contacting legislators, helping draft legislation, lobbying.

I saw Celilo Falls vanish forever in my lifetime; I don't want to see Darlingtonia californica and other rare plants vanish too. Please help in '83.

Flowers forever,

Rhoda Love
 President, NPSO

EIGHT DOLLAR MOUNTAIN - A New Preserve

Paul Lutus, recently characterized by the Wall Street Journal as the mountain hermit of Southern Oregon, has made a major gift of \$50,000 and two pieces of land to The Nature Conservancy. One of the most successful independent software writers in the national computer market, Paul until recently lived quietly, writing his revolutionary computer programs in a modest cabin he built on Eight Dollar Mountain, a rich botanical site near Grants Pass, Oregon. Nine months ago, he learned from Melody Allen, TNC staff person working on the project, of the Conservancy's efforts to protect several of the mountain's bogs. As this area may contain more rare plants per square foot than any other place in Oregon, Paul decided to give the Conservancy the bog he owned on the mountain as well as another tract of land which the Conservancy can sell to raise funds for the project.

When Paul presented TNC the deeds to the two properties, he added a personal check for \$50,000 as well. "I hope this can help save Eight Dollar Mountain," Lutus said. "I think the Conservancy staff has the spirit and ability to do the job. Natural lands are one of the values being threatened by our uncontrolled population growth. Saving land is one of the only significant things left for us to do."

Eight Dollar Mountain has long been known by botanists for its Darlingtonia bogs, which are rich in a variety of rare plants that grow only in the serpentine soils of the Siskiyou mountain range. The Conservancy began working to preserve part of the area only recently through its Oregon Critical Areas Program. Paul and Melody, working together, have taken options on two other tracts, and negotiations are underway for a third. Along with Paul's gift, the inclusion of these tracts in a TNC preserve will protect two of the finest bogs on the mountain in a 20-acre area.

[from Nature Conservancy News, recent issue]

ENDANGERED WILDFLOWERS
CALENDARS AND PLANT EXCHANGE

The Rare and Endangered Native Plant exchange, a recently-formed conservation collaborative whose members include the New England Wild Flower Society, the New York Botanical Garden, and the Tennessee Native Plant Society as well as other conservation, horticultural and botanical organizations, has produced a 1983 Endangered Wild Flower Calendar and initiated a Rare and Endangered Plant Propagule Exchange.

The 1983 calendar, measuring 10" by 17" when opened, contains fourteen full-color photographs of endangered wild flowers in their native habitats. The calendar also includes information about the habitat and unique characteristics of each featured plant, reasons for endangerment, and recovery plans. A map of the U.S. shows the distribution of endangered plants in each state. "Ways to help endangered flowers in your region" are suggested along with complete information about the Plant Exchange collaborative and its members.

The Rare and Endangered Native Plant Exchange is offering seeds of endangered plants to horticultural and botanical institutions and the general public. The purpose of the Exchange is to develop interest in cultivated sources for endangered species.

Participants will receive propagules which they may grow to maturity. After the plants have flowered and set fruit, the seed (or other propagules) will be returned to the Central Exchange for further distribution. Initial species in the Exchange include the Cumberland Rosemary (Conradina verticillata), Ruth's Golden-Aster (Heterotheca ruthii), the Spreading Glove Flower (Trollius laxus ssp. laxus), and pending official approval the Tennessee Coneflower (Echinacea tennesseensis). Instructions for the cultivation of each species will be included.

To join the Exchange and receive propagules of an endangered species, send \$5 to Dr. Rolf Martin, Rare and Endangered Native Plant Exchange, Dept. of Chemistry, Brooklyn College, Brooklyn, NY 11210.

Proceeds from both the Calendar and the Exchange will further support the conservation of endangered species. LEND YOUR SUPPORT!

[from Wild Flower Notes and News, Newsletter of the New England Wild Flower Society, Volume 1, Spring, 1982]

BOTANICAL ILLUSTRATION WORKSHOP

Linda Vorobik, NPSO Editor, will be holding a botanical illustration workshop, Saturday, January 8, 1983. The workshop will consist of two three-hour sessions: 9:00 - 12:00 noon, and 1:00 - 3:00 p.m. Linda aims to teach beginners the fundamentals of drawing basic plant forms, but artists and illustrators with any amount of experience are encouraged to attend. Ms. Vorobik has been illustrating for over five years, and many of her works have been published. A \$5.00 registration fee will go to the Emerald Chapter. For more information, write NPSO, Dept. Biology, U of O, Eugene OR 97403.

CHAPTER NEWS

COAST CHAPTER OF THE NPSO????????????????

There is a group of plant enthusiasts in Bandon who would like to organize a Bandon Chapter of the NPSO. Their enthusiasts range from rank amateurs to professional botanists and foresters. Persons interested in joining this group should contact Barbara Eakley, P.O. Box 1666, Bandon, OR 97411, 347-3030.

PORTLAND CHAPTER

Meetings:

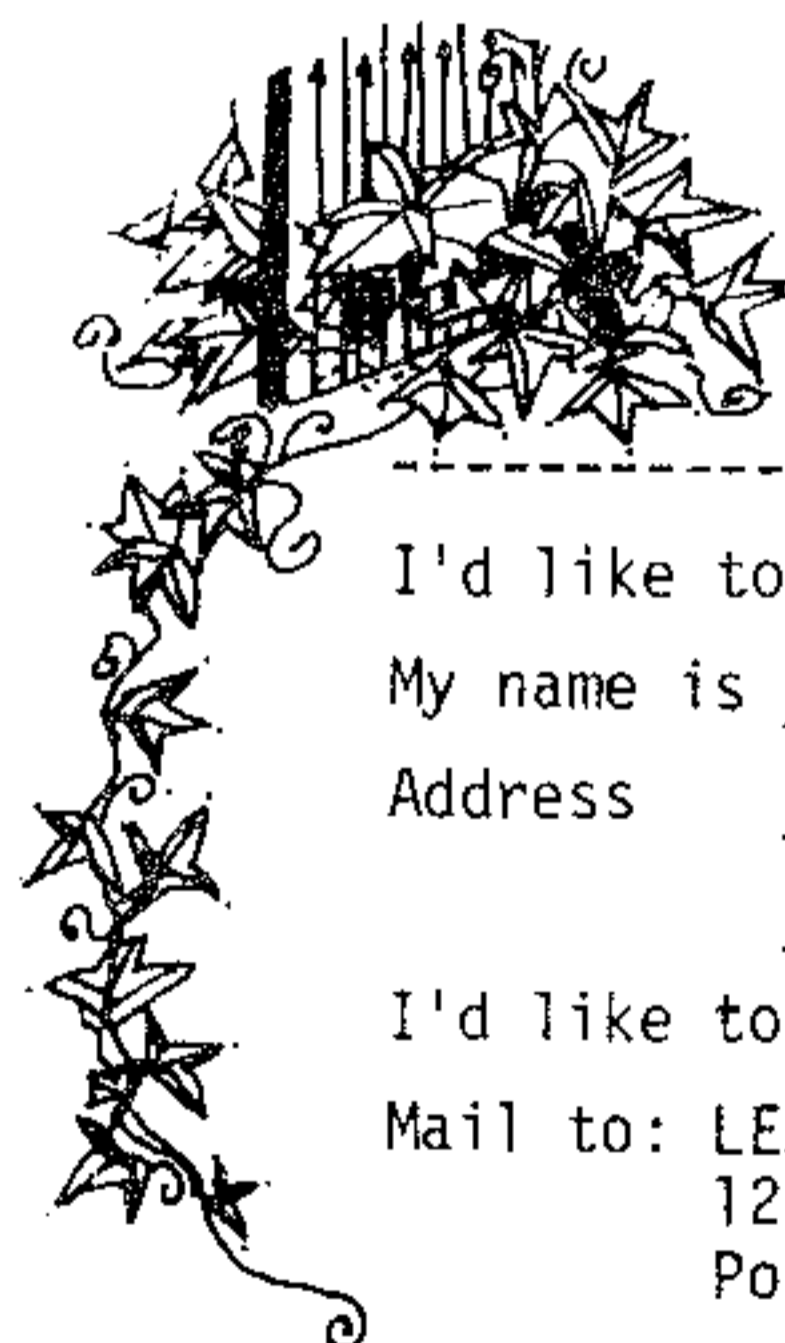
Wednesday, November 24, 7:00 p.m., Central Library, 801 SW 10th, Portland. Janet Lindgren, a member of the Oregon Mycological Society, will give us an introduction to mushrooms. Janet has taught several short courses in mushroom identification and was co-chairman of the Oregon Mycological fall show held October 31.

For the December program we are asking that each member bring 10 favorite slides from botanizing trips of 1982.

SLEEPY HOLLOW NEWS

Leach Northwest Wildflower Botanical Park will be open with regularly scheduled guided Saturday walks in November and December at 10:00 a.m.; other days by appointment. Call 761-6081. The many trees and evergreen shrubs will be featured during the winter season.

A LEACH BAZAAR on December 10th, Friday, will be held at 1100 Imperial and Hassalo, N.E. Portland, to raise money for parking lot acquisition as we rush to augment the money voted by the City of Portland. It will make a difference on how many trees must be dug out to provide the required parking spaces for a public building.



LEACH GARDEN FRIENDS
are people who have come together to help protect the future of Leach Garden.

I'd like to be a Friend of Leach Garden.

My name is _____

Address _____

Zip _____

I'd like to donate \$1.00 or more: \$ _____

Mail to: LEACH GARDEN FRIENDS
12924 SE Knapp
Portland, Oregon 97236

COMMITTEES ARE WELCOMING HELP

Guide Training starts October 11 at 7:00 p.m., and continues through November. Luncheon and evening slide/lecture programs are being given for various organizations upon request. The Historical-Manuscript Committee is gathering information on women botanists of the Western States and will be grateful for suggestions. Leach Librarian, Mrs. Hall, has begun to receive books and pamphlets pertaining to native wildflowers and horticulture. Send all mail to 6704 S.E. 122nd Avenue, Portland, Oregon 97236, in care of Leach Garden Friends.

CORVALLIS CHAPTER

Meeting:

Thursday, November 18, 7:30 p.m., at OSU, Cordley Hall, Room 2082. Nature Conservancy in Oregon. Speaker to be announced.

Field Trip:

November field trip to be announced at the November meeting.

HIGH DESERT CHAPTER

Meeting:

November 30, 7:30 p.m. in Cascade Natural Gas Meeting Room. Plants of Big Summit Prairie will be the topic of our meeting. Christy Steck, expert botanist and charter member of NPSO will be our speaker. Show will start at 7:30.

SISKIYOU CHAPTER

Meetings:

Thursday, November 11. Spring Flora of Southern Appalachians. Dr. Frank Lang, SOSC Professor of Botany, will guide us through some of his recent sabbatical tour in Eastern U.S. A good opportunity to learn about the plant communities on the other side of our continent. We will meet at 7:30 p.m. in Room 171 of the Science Building at Souther Oregon State College.

Thursday, December 9. Meeting to be held at 7:30 p.m. in Room 171 of the Science Building at SOSC, Ashland. Topic will be announced in December Bulletin.

Field Trips:

Saturday, October 23. The Applegate Valley. Mark Pechall, Geologist for the Rogue River National Forest will share the geology of the Applegate countray. Most of the walking will be easy - bring lunch and water. Carpools will leave Ashland Bi-Mart at 8:00 a.m., and Medford K-Mart at 8:30 a.m. For more information contact Cynthia at 482-0899. Applegate residents can meet at the Applegate Grange Co-op on Upper Applegate Road at 9:15 a.m.

Saturday, November 6. Albert Abee, the District Forest Ecologist with BLM, will lead a day trip to various portions of the Jacksonville Resource Area. He will facilitate the field trip group in interpreting the ecology of some local forests and plant communities. Carpools will leave Ashland Bi-Mart at 8:00 a.m. and Medford K-Mart at 8:30 a.m. Contact Cynthia for more information, 482=0899.

WILLAMETTE VALLEY CHAPTER

Meetings:

Monday, November 15, 7:30 p.m. Members' Slides, with emphasis on those plants for which you need help with identification. Don't miss this opportunity. Unusual native plants, plant habitats, or your favorite plant subject are also welcome. Wilbur Bluhm, coordinator, 393-2934.

EMERALD CHAPTER

Meetings:

Monday, November 1, 7:15 p.m. Dr. Kenton Chambers, Exploring the mysteries of the miner's lettuce. Dr Chambers, plant systematist and curator of the OSU herbarium, will discuss his research of the genus Claytonia in the Purslane Family, Portulacaceae. We will be meeting at the American Red Cross building, 18th and Willamette St., Eugene.

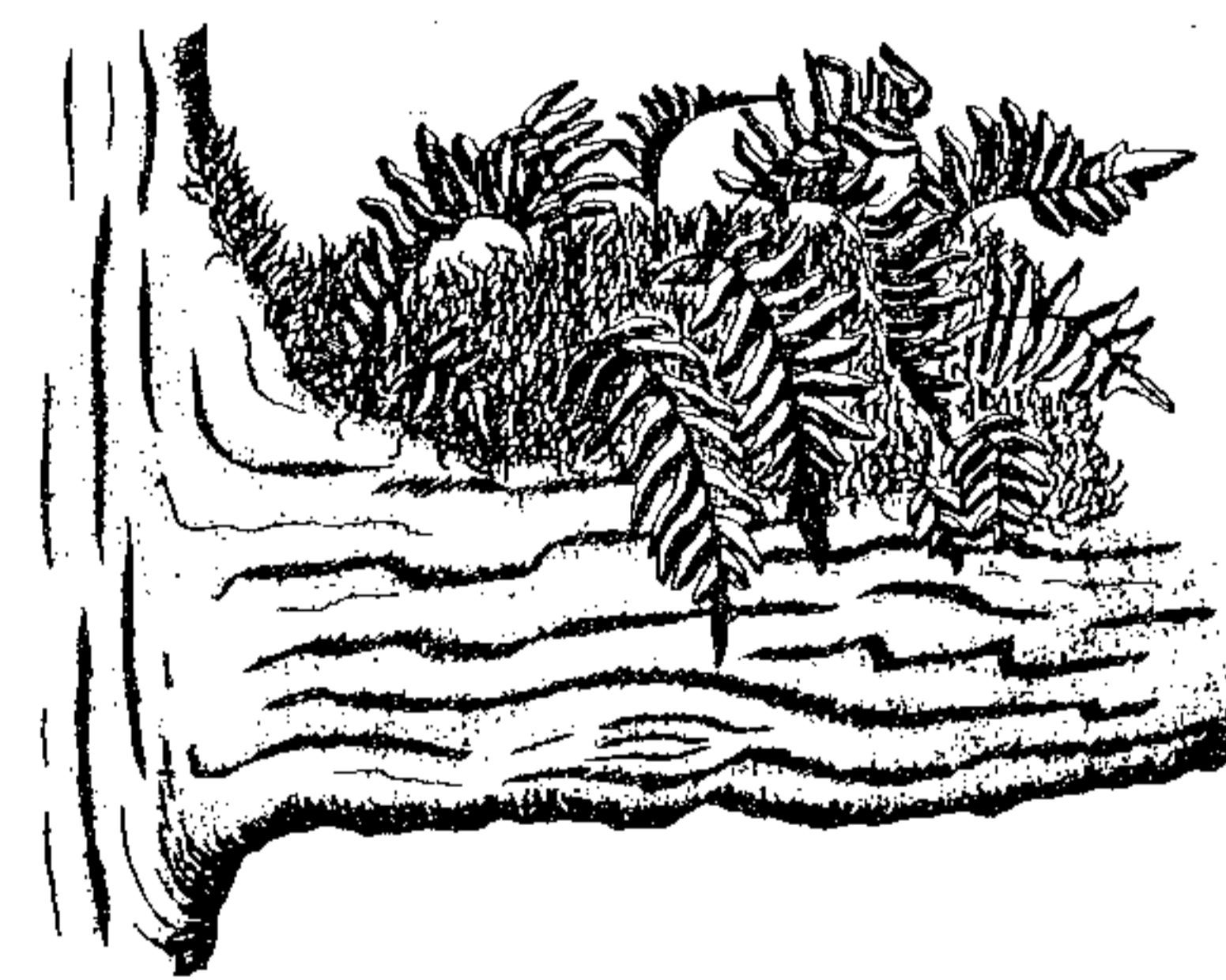
Monday, December 6, 7:00 p.m. In lieu of our regular meeting, we will have a Christmas Social and Gift Bazaar. We'll enjoy a bit of seasonal refreshments, bid on an array of gift items brought in by the members, and share 10-15 best slides from spring and summer field trips. This will be held at the American Red Cross Building, address above.

Monday, January 10, 7:15 p.m. Dr. William (Bill) Bradshaw, Pitcher Plants. Dr. Bradshaw, U of O Biology professor, will highlight us on this very insectivorous subject.

EUGENE'S U OF O MUSEUM OF NATURAL HISTORY

The Museum of Natural History's Open House on October 10th was extremely well attended and was highlighted by Mr. Bill Bowerman's \$10,000 gift to the Museum. He also offered to match any other donations to the Museum until an additional \$10,000 is raised. Thank you Mr. Bowerman!

The Open House featured many new exhibits and demonstrations which included plant specimen mounting by Dr. Wagner, and botanical illustration by Linda Vorobik. All the new exhibits are waiting to be enjoyed by those of you who missed the Open House. Make sure you see the last six plates of the FACT RACK: Flowering Plant Families. This is a collection of photos by Albert Raddin Sweetser, a turn-of-the-century U of O botany proffessor. Also of interest are photos of the Oregon Cascades, by Don Hunter, and scientific illustrations by Linda Vorobik. The Museum is open Tuesday through Saturday, noon to 5:00 p.m.



MT. PISGAH ARBORETUM - OUTDOOR EDUCATION

The Mt. Pisgah Arboretum Outdoor-Natural History Program will hold its monthly Educational committee meeting on November 16, at 9:30 a.m., in the home of Marge Smith, 175 W 20th Ave, Eugene. The Arboretum's program was a success last may when we took over 1,000 students around our one-mile Nature Trail. Our volunteer guides explained Arboretum features to students at each of ten stations. We would like to expand our program to accomodate about twice as many students next May, BUT WE NEED YOUR HELP! For more information an how you could fit in to this program, please call Linda Johnson, chairperson, at 7474048, or attend the monthly meeting.

GARDENING WITH NATIVE PLANTS OF THE
PACIFIC NORTHWEST

By Arthur R. Kruckeberg
U of W Press
Seattle, Washington 98195
\$24.95

Oregon Grape, (mahonia, or Berberis aquifolium) had already been introduced into Spain before the 19th century from seeds and plants sent to the Old World from the Northwest by naturalist-explorer Jose' Moziño. In 1824 the London Horticultural Society sent Scotsman David Douglas to the Pacific Northwest to collect dried specimens of flora and harvest seeds for propagation in Britain. Thanks to Douglas (for whom the Douglas fir was named) British and other gardens of the world have displayed native Pacific Northwest plants for decades. Here in the Pacific Northwest, however, we're more inclined to buy shrubs native to China and Japan and trees native to our own east coast for use in our gardens as if being from somewhere else makes them more garden-worthy. At the same time our Pacific Madrone (Arbutus menziesii) is one of the most prized evergreen trees in Europe, and Artemisia tridentata (if you can believe it!) our common sagebrush, is a popular shrub in Britain where its gray foliage is used as a striking contrast in green borders.

In recent years there has been increasing interest in native plants along with concern for preserving some of the Northwest's natural features. Use of native plants as living ornaments in our built environment (cities, suburbia, rural communities), is a logical extension of these interests, as well as a way to create a natural woodland or alpine garden right outside your door.

In this book, Washington botanist Arthur Kruckeberg describes plants of ornamental value which are native to the Pacific Northwest (southern British Columbia to northern California, east to the Rocky Mountains and the Great Basin), and in a delightful, easy-to-read style discusses their habitats and range, possible garden uses and propagation method. He describes 250 plants including 50 species of trees (broadleaf and conifers) 75 species of shrubs and groundcovers and 115 species of herbaceous perennials. These are accompanied by lovely color plants, line drawings and black and white photographs.



Berberis aquifolium and Arbutus menziesii (above), illustrated by J. R. Janish, from Hitchcock et al, Vascular Plants of the Pacific Northwest



An active conservationist, Kruckeberg stresses throughout the book the importance of respecting the ethics and rules of collecting in the wild. The reader is encouraged to collect only cuttings and seeds, except in those special circumstances when the habitat is seriously disturbed or under certain threat of destruction. The book includes an appendix listing statutes applying to plant collecting, and suggestions of sources of information and permission for collecting.

To assist the reader in selecting the right plant for the right situation from this very diverse region, Kruckeberg includes tables listing gardening potential for regions of the Pacific Northwest, giving climate, geology, soils and gardening conditions of eight provinces from the San Juan Islands to Idaho uplands and montane valleys; natural vegetation zones and gardening potential of 16 zones, weather records for selected cities in B.C., Washington and Oregon, and maps of vegetation and plant hardiness zones.

The author discusses environmental requirements to consider in selecting plants including temperature, soil, topography, plant interactions and aesthetic qualities. There is a small but well-done section on propagation techniques and appendices giving nursery sources and lists of natives suitable for planting in particular settings (sun, shade, woodland, rock garden, etc.).

The book takes us step by step, with enthusiasm and clarity, through everything we need to know to garden with native plants. The maps, tables, lists and descriptions help in planning what plant would be appropriate and would do well in a given situation. Information on habitat, collecting, propagation, and growing requirements entice the reader to the hunt, to collecting without risk of damaging plant or habitat, and offer the vision of success in incorporating the beauty of Pacific Northwest natives into our man-made outdoor living areas.

Evelyn Hess
Eugene Chapter

The Future is Abundant, which was reviewed in the October 1982 Bulletin, is available from Tilth, 13217 Mattson Road, Arlington, WA 98223, at a cost of \$12.95 post paid (\$13.95 in Washington state).

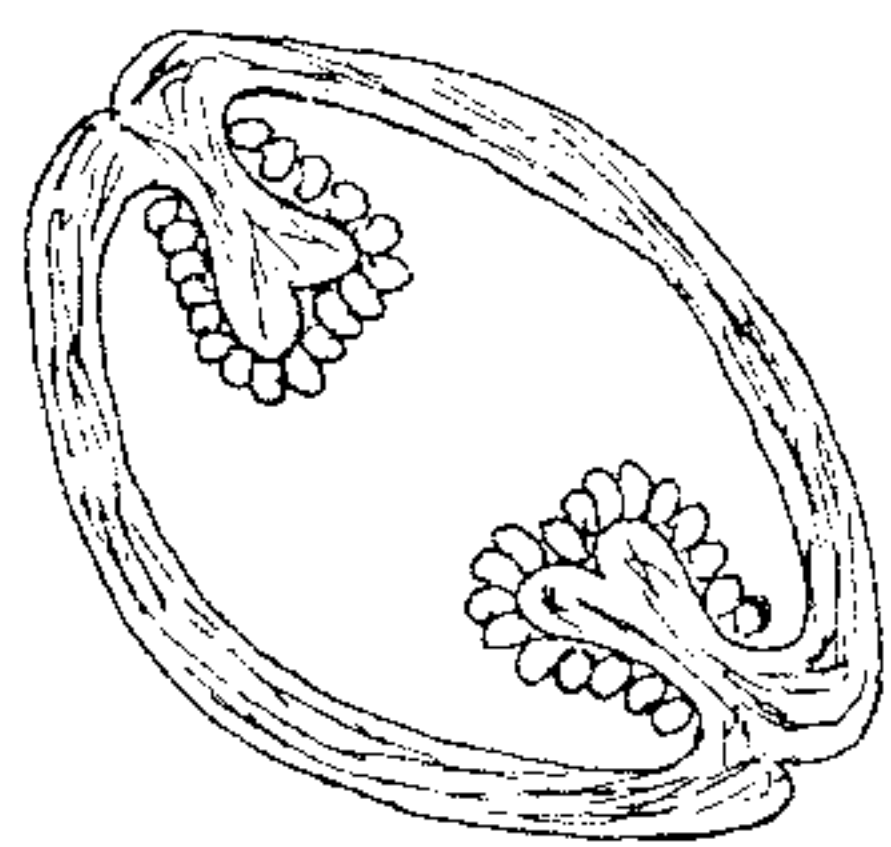
PLANT FAMILY PROFILES

By Herm Fitz

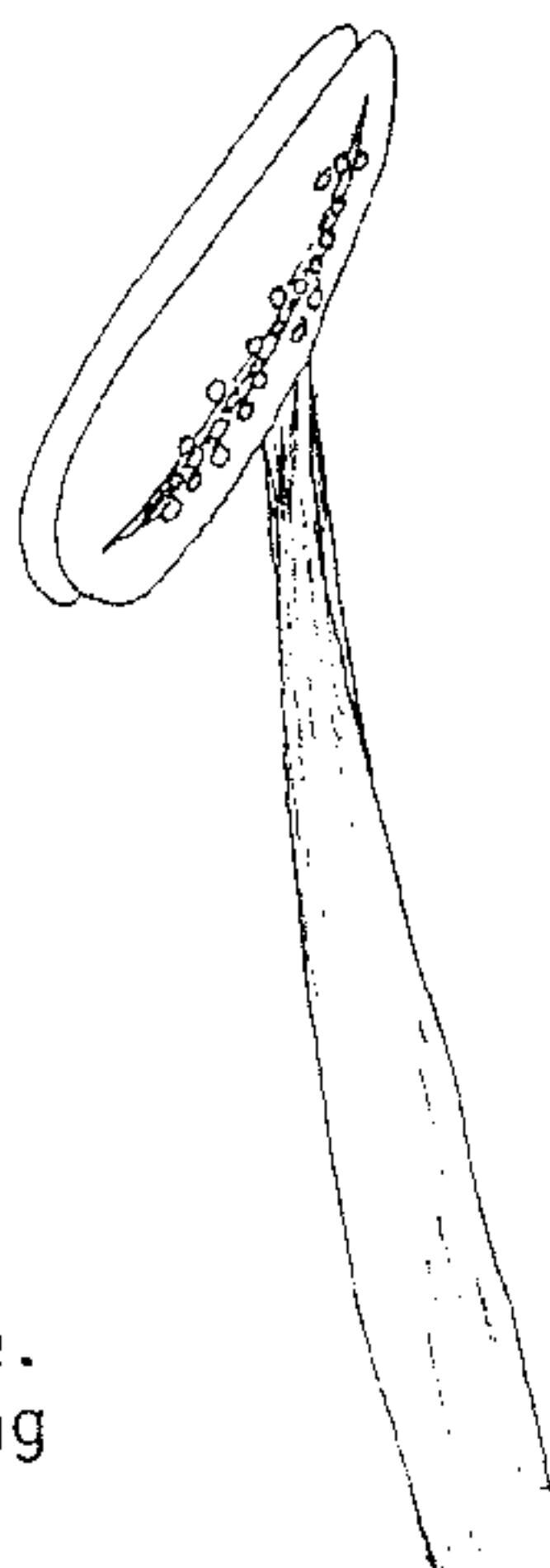
The Gentianaceae - GENTIAN FAMILY

The Gentian Family is not large, consisting of perhaps 900 species of herbs, rarely subshrubs or shrubs, in 80 genera spread throughout the world, often in cool, moist habitats especially in temperate regions. Five genera are represented by some twenty species in Oregon. Most common are the Gentians (*Gentiana*), usually with deep rich metallic blue flowers, from the lowlands to subalpine areas in wet places, along streambanks, in bogs, mossy waterfall spray zones, or occasionally drier mountain slopes. Of the 11 species, several are quite rare: *G. prostrata* of the Steens Mountain, *G. newberryi* disjunct in high Cascade wet meadows as far north as McKenzie Pass, *G. bisetata* of *Darlingtonia* bogs in southwestern Oregon, and *G. simplex*, a 4-parted annual in medium elevation mountain bogs and meadows. Five species of *Frasera* (*Frasera*), with bluish to white flowers, are scattered in varied habitats from open hills and valleys, moist woods and meadowlands in the plains and lower mountains to the drier meadowlands, even to sagebrush steppe and ponderosa pine forests. Among these, the tall Umpqua Swertia (*Frasera umpquaensis*) is rare in open subalpine woods from the Rogue-Umpqua Divide to Sourgrass Mountain of the middle Cascades southeast of Eugene. Three species of Centaury (*Centaureum*), with white to yellowish to salmon or red flowers, occur in Oregon: The natives *C. exaltatum*, in moist places especially around hot springs and alkaline lakes east of the Cascades and *C. muhlenbergii*, coming from the east through the Columbia Gorge to the Willamette Valley; and the European *C. umbellatum*, generally in moist meadows, prairies or hillsides chiefly west of the Cascades. Two genera are monospecific in Oregon; the representatives are: Swertia (*Swertia perennis*), mostly with bluish-purple flowers, widespread in montane to subalpine western North America in moist meadowland or along streambanks, and Timwort (*Microcala quadrangularis*), a diminutive annual with 4-parted yellow flowers only rarely seen or collected (3 times in the past 90 years; most recently - 1981 - on a grassy slope near the Eugene-Springfield area).

Members of this family, usually with glabrous herbage, are characterized by simple, entire, opposite to whorled leaves, often connate at the base. The plants are rhizomatous, commonly with mycorrhizae, becoming saprophytic in the tropical genus *Voyria*. The flowers, often quite showy, are perfect (both sexes present) and regular (actinomorphic or bilaterally symmetrical). Borne

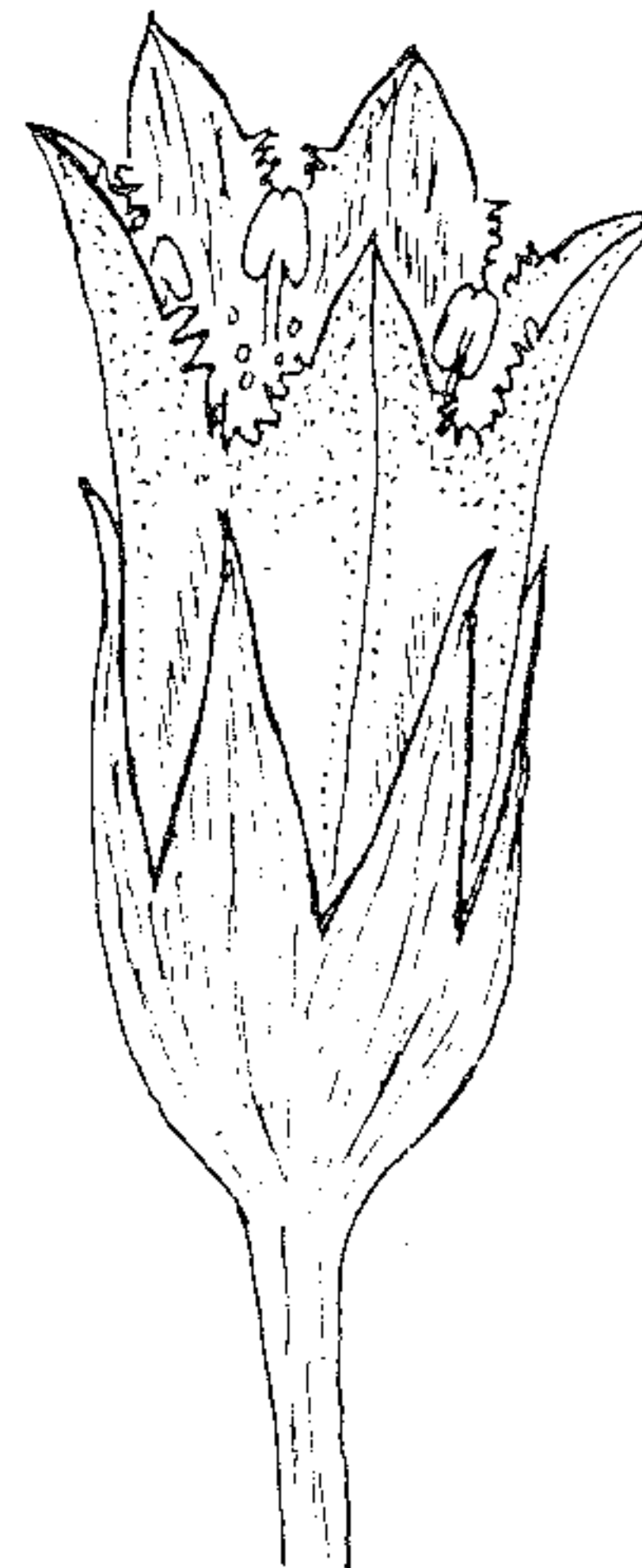


Cross-section through the ovary of a typical member of the Gentianaceae. Note the unilocular, bicarpellate condition with intruded parietal placentation bearing numerous ovules.



A typical stamen from Gentianaceae. Note the versatile anther dehiscing (splitting) by longitudinal slits.

Timwort (*Microcala quadrangularis*), showing the imbricate united calyx, united corolla, and simple, entire opposite leaves. (life size)

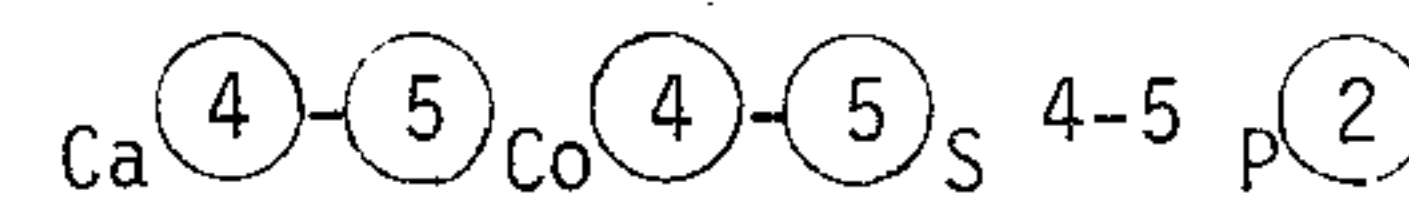


A single flower of Newberry's Gentian (*Gentiana newberryi*). Note the united calyx and corolla and the epipetalous, alternate stamens. (life size)

solitary or in cymes, each flower consists of a united calyx, generally imbricate or with an overlapping or folded nature, of 4-5 sepals. The corolla may be rotate, bell-shaped to salverform or tubular - in all cases consisting of 4-5 united petals, twisted in the bud. Stamens are epipetalous ("upon the petals"), mounted alternately between the corolla lobes equal in number to the same, and with versatile anthers opening by longitudinal slits. The pistil is single, having two carpels fused into a superior, unilocular ovary, a glandular disc at its base, with two intruded parietal placentae each bearing numerous ovules. The style is simple, with a simple or a 2-lobed stigma. The fruit is a septicidal capsule releasing many seeds.

As a group, the family tends to bloom later in the season, especially the Gentians which bloom from late summer to fall. During cloudy weather the Gentian blossoms close in a twisted mass, and are best observed open during sunny weather. Perhaps this mechanism excludes certain pollinators that fly during cloudy weather, thus ensuring greater "fidelity" to those that fly during sunny conditions? Some gentians are cultivated as garden ornamentals; a few (*Gentiana*, *Swertia*, *Centaureum umbellatum*) yield "bitter principles" in their rhizomes that are of medicinal value in various infusions, extracts, and decoctions.

The generalized floral formula of the Gentianaceae is expressed:



with a superior ovary. So . . . if you encounter a glabrous herb with opposite or whorled simple, entire leaves, the 4 or 5-parted perfect flowers with imbricate calyx and twisted corolla, both united, and 5 epipetalous, alternate stamens bearing versatile anthers - and if you find a single pistil with a unilocular, bicarpellate superior ovary subtended by a fleshy disc - then it is likely that you have found a member of the Gentianaceae - the Gentian Family.

PROPOSED CHANGES IN THE BY-LAWS OF THE NATIVE PLANT SOCIETY OF OREGON

NOTE: MATERIAL TO BE ADDED IS IN ITALICS, AND MATERIAL TO BE DELETED IS IN PARENTHESES AND UNDERLINED. THESE CHANGES WERE APPROVED FOR SUBMISSION TO THE GENERAL MEMBERSHIP BY THE NPSO BOARD OF DIRECTORS AT ITS MEETING IN PORTLAND ON 25 SEPTEMBER 1982. BY-LAWS COMPLETE BELOW.

Article I - PURPOSE OF THE SOCIETY

Section 1. Purpose of the Society

The purpose of the Native Plant Society of Oregon is the preservation, conservation and the study of the native plants and vegetation of Oregon and the education of the public to the value of the native flora and its habitat.

Article II - CORPORATION

Section 1. Corporation

This corporation is formed for charitable, educational and scientific purposes.

Article III - MEMBERSHIP

Section 1. Eligibility

Membership in this Society shall be open to all persons, families or groups interested in the native plants of Oregon. Membership shall be conferred in two ways:

1. upon written application to the (Secretary) *State Membership Chairman*, accompanied by remittance for dues as hereinafter provided, or
2. as a member of a chapter as outlined under Article IX.

All paid-up members of Oregon chapters are automatically members of the Native Plant Society of Oregon. Membership classifications shall be set and (reviewed) *revised* as needed by the Board of Directors.

Section 2. Right of Members to Vote

Each membership shall be entitled to one (1) vote on any question requiring a vote of the membership of the corporation ^(.) ~~except~~ *except for family memberships. Each family membership shall be entitled to a maximum of two votes each.* The right to vote of a group member shall be exercised by an individual designated in writing as the official delegate for the group (a group refers to any affiliated organization other than a chapter).

Section 3. Use of the Society's Name

No member may speak for or in name of the Society without authorization of the Board of Directors.

Article IV - MEETINGS

Section 1. Annual and Special Meetings

An annual meeting of the Native Plant Society of Oregon shall be held at the date and place to be decided by the Board of Directors. Special meetings of the membership may be called at any time by the Board of Directors. All members shall be notified in writing, or by publication not less than two weeks before such a meeting.

Section 2. Quorum

The presence of 5% of the members at any statewide meeting shall be necessary to constitute a quorum for the transaction of business. Every act or decision (done or made by) *of* a majority of the members present at a meeting duly held, at which a quorum is present, (shall be regarded as) *is* a valid act of the members, unless a greater number is required by law, or by the Articles of Incorporation or by the By-Laws.

Article V - DUES

Section 1. Fiscal Year

The fiscal year shall begin January 1 (.) *and end on December 31 of each year. Annual membership is renewable each calendar year.*

Section 2. Determination of Dues

Dues shall be fixed and reviewed as needed by the Board of Directors. Dues shall be payable January 1 and if unpaid by April 1 the membership lapses.

Section 3. Disposition of Dues

The dues of (the) *all* chapter members shall be (collected by the Chapter Treasurer or Sec.-Treas. except for the Patron category. Each Chapter Treasurer shall collect the annual dues from each member and shall remit to the State Treasurer of the NPSO two-thirds of the amount. The remaining one-third of the dues shall be retained by the chapter) *paid to the Membership Chairman. Thirty-five percent (35%) of all dues shall be remitted by the Treasurer to the local chapters for local expenses or any other use (which may be) desired by the (local) chapter (.), except for dues in the Patron Category. For Patron dues, an amount equal to 35% of one year's dues shall be remitted to the chapter to which the member belongs.*

continued on next page

Article VI - GOVERNING BODY

Section 1. Board of Directors, Eligibility

The Board of Directors shall be the Governing Body of the Society and only persons who are members of the Native Plant Society of Oregon shall be eligible (to be) for membership (of) on this board.

Section 2. Board of Directors, Composition

The Board of Directors shall consist of the statewide officers of the Society, the Presidents of all affiliated chapters, *the State Membership Chairman, the Editor of the Bulletin*, plus six members elected by the general membership of the Society. Three of these (Members) Directors-at-large shall be elected each year (with terms of one or two years to be determined by a drawing at the first Board meeting).

Section 3. Vacancies

A vacancy in the (Board of Directors) office of Vice-President, Secretary, Treasurer, or Director-at-Large shall be filled by the majority vote of the remaining Directors. *An officer or Director-at-Large* thus elected shall hold the office for the unexpired term.

Section 4. Meetings

There shall be a meeting of the Board of Directors at the time and place of the Annual Meeting. Additional meetings may be called by the President, or in his or her absence, inability, or refusal to act, by the Vice-President, or by any five Directors. Written notification of the date, time and place of the meetings of the Board of Directors shall be given by the Secretary to each Director at least fourteen (14) days prior to the meetings.

Section 5. Quorum

The presence of one-third of the Directors at a Board meeting shall be necessary to constitute a quorum for the transaction of business. Every act or decision by a majority of the Directors present at a meeting duly held, at which a quorum is present, (shall be regarded as) is a valid act of the Board of Directors.

Article VII - OFFICERS

Section 1. Offices, Duties of President

The elected officers shall be a President, Vice-President, Secretary, and a Treasurer.

Section 2. *President*

The President shall preside at the meetings of the membership and of the Board of Directors, *act as spokesman for the society*, and (shall) perform (the recognized) additional functions (of the office) as required.

Section (2) 3. *Vice-President*

The Vice-President shall preside in the absence of the President and shall perform (the recognized) additional functions (of the office) as required. He/she shall become President immediately if the office of President becomes vacant.

Section (3) 4. *Treasurer*

The Treasurer shall keep and maintain, or cause to be kept and maintained, adequate and correct accounts of the transactions of the Society, including accounts of its assets, liabilities, receipts, and disbursements. The Treasurer shall deposit all moneys and other valuables in the name and to the credit of the Corporation with such depositories as may be designated by the Board of Directors. He or she shall disburse the funds of the Society as may be ordered by the Board, shall render to the President and Directors, whenever they request it, an account of all his or her transactions as Treasurer, and of the financial condition of the Society. *He/she shall remit promptly to chapter treasurers their portion of all membership dues as received monthly*, and shall have such other powers and perform such other duties as may be prescribed by the Board of Directors or the By-Laws. (The Treasurer shall maintain a roster of all active members.) An audit (must) shall be made within 30 days prior to the Annual Meeting (by a competent member appointee). *The auditor shall be appointed by the President and may be a member competent in accounting or an accountant not associated with the Society.*

Section (4) 5. *Secretary*

The Secretary shall keep the minutes of all meetings of the Board of Directors, and state-wide meetings of the members, with the time and place of holding, and shall have duties as may be prescribed by the Board of Directors. The Secretary shall prepare such directives and other documents as are needed and authorized by the Board of Directors.

Section (7) 6. Membership Chairman (and Editor)

(The)A state membership chairman (and editor of the society bulletin) shall be appointed annually by the President, with the approval of the Board of Directors. (Duties of these officers will be prescribed by the Board of Directors.) The membership chairman shall maintain the official roster of NPSO members and forward all dues received, together with an accounting of them, promptly on a monthly basis, to the Treasurer. The membership chairman shall report the names of new members and any address changes to the editor of the Bulletin promptly on a monthly basis, and perform any other duties prescribed by the Board of Directors. (Both) The membership chairman shall (be) serve ex-officio as a non-voting member(s) of the Board of Directors.

Section 7. Editor of the Bulletin

The editor of the Native Plant Society of Oregon Bulletin shall be appointed annually by the President with the approval of the Board of Directors, to perform the duties customarily associated with the office and such other duties as the Board of Directors prescribe. The editor shall serve ex-officio as a non-voting member of the Board of Directors.

Section (5) 8. Delivery of Records

Each officer, shall, upon the expiration of his or her term, or the termination of his or her duties for any other reason, deliver to his or her successor the record of the office.

(Section 6. Vacancy

A vacancy in the office of Vice-President, Secretary, or Treasurer may be filled by an election held for this purpose at a meeting of the remaining Directors.)

Article VIII - ELECTIONS

Section 1. Notice

The Bulletin of the Native Plant Society of Oregon shall contain a timely notice of the annual election of officers.

Section 2. Nominating Committee

By November 15th of each year the President shall appoint a Nominating Committee to consist of a Chairman and 3 or more members of which only one is a member of the Board of Directors. The(y) committee shall report to the President by December 15th the names of (the) its nominees (selected by the committee) for elective office. The (names) membership of the Nominating Committee, the list of the offices to be filled by election and the names of the (nominees) candidates shall be printed in the January Bulletin (or the February Bulletin in case there are). The names of additional nominees submitted by any group of 5 or more paid members shall be printed in the February Bulletin. A brief resume of the qualifications of each candidate shall also be printed in either the January (Bulletin) or February Bulletin (in case of additional nominees). The Nominating Committee shall not recommend any member for office without receiving consent of the nominee.

Section 3. Mail Ballot (note: this sentence formerly a part of section 2; ed.)

A ballot including the names of (the) all nominees shall be printed and enclosed with the March Bulletin and mailed to all paid members with instructions that it be returned not later than April 1st.

Section 4. Ballot Committee

Ballots shall be counted by a ballot committee appointed by the President. (and) The candidate(s) for each office receiving the most votes shall be certified as elected. In case of a tie vote the Board of Directors shall decide. The newly elected officers take office at the conclusion of the annual meeting.

Article IX - CHAPTER ORGANIZATION

Section 1. Founding Procedure

A group of ten (10) or more persons, members or nonmembers of the Society, may organize a chapter of the Native Plant Society of Oregon (by a request to the State Secretary and with) upon approval of the Board of Directors. (The) A written request addressed to the State Board for recognition as a chapter shall be mailed to the state membership chairman to initiate the process. It shall be accompanied by (the) fully completed applications for membership and payment of current dues for each nonmember (to the Society Treasurer).

Section 2. Chapter Name

Such chapters as the Board of Directors may authorize shall be designated (as), "The _____ Chapter of the Native Plant Society of Oregon." (Where an already) When a previously organized club or society (wants) desires to become a NPSO chapter, it may retain its name, if (it) prefer(s)red, and be known officially as, "The _____ Club/Society, a Chapter of the Native Plant Society of Oregon."

Section 3. Chapter Officers, Election

CHANGES IN NPSO BY-LAWS, continued

Members of (the) each chapter shall elect their own officers, consisting of at least a President, Vice-President, Secretary and Treasurer (or Secretary-Treasurer). All elections results shall be promptly reported to the Secretary of the Native Plant Society of Oregon.

Section 4. Chapter Officers, Duties

Duties of the chapter officers shall be those usually associated with the office.

Section 5. Board Membership of Chapter Officers

The President of each local chapter shall be a member of the Board of Directors of the Native Plant Society of Oregon.

Section 6. Membership Privileges

All members of a local chapter have full membership in the Native Plant Society of Oregon, and are entitled to all the privileges pertaining thereto.

Section 7. Chapter By-Laws

Local chapters are authorized to adopt their own by-laws, not inconsistent with those of the Society.

Section 8. Chapter Programs

Each chapter is encouraged to have its own programs and educational (exhibits) activities.

Section 9. Chapter Reports

Publications, (and) reports of meetings, (or any articles) Chapter news and items for publication should be sent to the Editor of the Bulletin of the Native Plant Society of Oregon. Such information must be received by the monthly publication deadline (, the 15th of each month preceeding publication of the Bulletin) established by the editor.

Section 10. Chapter Independence

No chapter or affiliated society, or any officer or member thereof, except with approval of the Board of Directors, shall have power to act for the (Parent) Native Plant Society of Oregon in any official manner, financially or otherwise. Local chapters shall hold harmless the Native Plant Society of Oregon from any liability in connection with activities or functions of the chapters.

Section 11. Chapter Meetings

Meetings of the members of local chapters shall be held not less than four times annually, the dates, time and place to be decided by the local officers.

Section 12. Dues

Each chapter Treasurer or Secretary-Treasurer (shall) may collect the annual dues from each member and shall remit (two-thirds to the State Treasurer. The remainder of the dues from each member shall be retained for local expenses.) them in full promptly to the NPSO state membership chairman, together with annual membership renewals.

(Article X - FISCAL YEAR)

(Section 1. Fiscal Year

The fiscal year of the corporation shall begin on the first day of January and end on the last day of December in each year.)

Article (XI) X - AMENDMENTS

Section 1. Amendment Procedure

These By-Laws may be amended by a two-thirds vote of those present and voting at any regular meeting of the Society, provided that the proposed amendment or amendments shall have been printed in the Bulletin at least one month before the meeting. Amendments, if approved by the Board of Directors, may be made by mail ballot, by a two-thirds vote of those voting provided the proposed amendment or amendments shall have been printed in the Bulletin and that the ballots (may) not be counted until at least one month after publication, and (after they were mailed out) ballot mailout.

***** BALLOT *****

I APPROVE the changes to the By-Laws of the Native Plant Society of Oregon as proposed in the NPSO November 1982 Bulletin.

I DO NOT APPROVE the changes to the By-Laws of the Native Plant Society of Oregon as proposed in the NPSO November 1982 Bulletin.

RETURN THIS BALLOT TO YOUR CHAPTER PRESIDENT AT YOUR NEXT CHAPTER MEETING, OR TO RHODA LOVE, NPSO PRESIDENT, AT 393 FULVUE DR., EUGENE OR 97405. ALL BALLOTS MUST REACH RHODA BY 15 DECEMBER 1982.



Non Profit Org.
U.S. Postage
PAID
Eugene OR 97401
Permit No. 437

The Editor
Native Plant Society of Oregon
Department of Biology
University of Oregon
Eugene, Oregon 97403

The NPSO Bulletin is published monthly by the Native Plant Society of Oregon incorporated under the laws of the state of Oregon. You are invited to join. Membership includes Bulletin subscription. Use the form provided by local chapters for membership applications or change of address; chapter presidents with addresses and phone numbers are listed below. Send forms to: Mary Falconer; Membership Chair; 1920 Engel Ave. NW; Salem OR 97304.

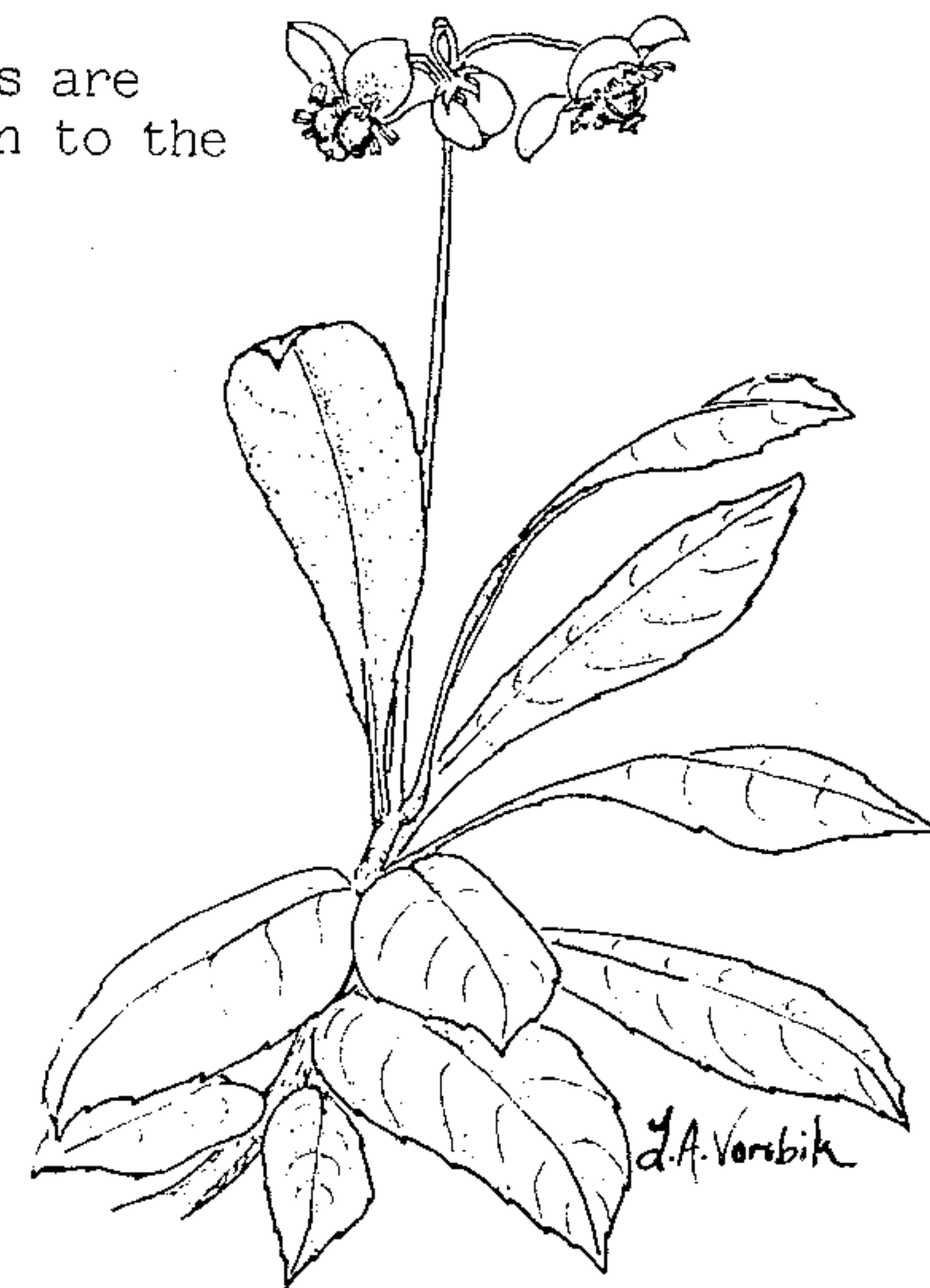
Contributions to the NPSO Bulletin or non-delivery notice should be sent to the editor. Others are welcome to use material from the NPSO Bulletin. Courtesy pleads, however, that credit be given to the author and to the Bulletin. Copy deadline is the 15th of each month.

NATIVE PLANT SOCIETY OF OREGON

President: Rhoda Love, 393 FulVue Dr., Eugene OR 97405, 345-6241.
Vice President: Anne E. Kowalishen, 4949 NE 34th, Portland OR 97212, 288-2736.
Secretary: Paula Vincent, 1836 Manzanita, Klamath Falls OR 97601, 882-9630.
Treasurer: Nadine Smith, 1128 Jackson, Eugene OR 97402, 344-6478.
Board of Directors: Wilbur Bluhm, Florence Ebeling, Marge Ettinger, Cynthia Roberts, Larry Scofield, and Veva Stansell.
NPSO Bulletin Editor: Linda Ann Vorobik, Department of Biology, University of Oregon, Eugene OR 97403, 686-3033.

CHAPTER PRESIDENTS

Blue Mountain: Harry Oswald, Box 459, Pendleton OR 97801, 276-2292.
Corvallis: Esther McEvoy, 3290 SW Willamette, Corvallis OR 97333, 754-0893.
Emerald: Charlene Simpson, 2455 Alder St., Eugene OR 97405, 686-1094.
High Desert: Stuart Garrett, 361 NE Franklin, Bend OR 97701, 389-6981.
Mid-Columbia: Keith Chamberlain, Box 151, Mosier OR 97040, 478-3314.
Portland: Virginia Diegel, 16415 NW Brugger Rd., Portland OR 97229, 645-1344.
Siskiyou: Darlene Southworth, 496 Beach St., Ashland OR 97520, 482-6341.
Willamette Valley: George Schoppert, 11265 Phantom Ln. SE, Stayton OR 97383, 859-2613.



Chimophila
menziesii

little prince's pine