



KALMIOPSIS

Journal of the Native Plant Society of Oregon



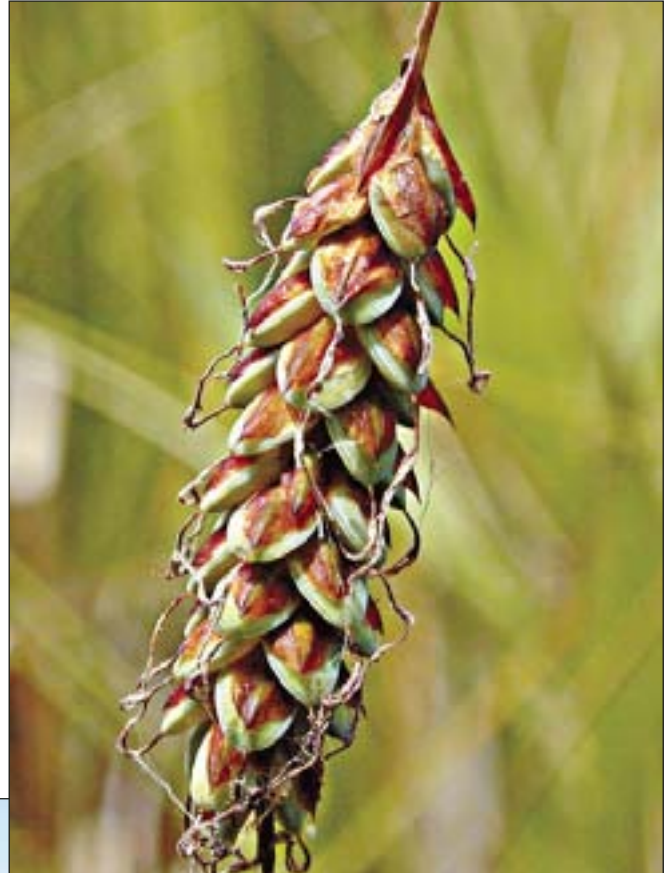
Cone of gray pine (*Pinus sabiniana*)

KALMIOPSIS

Journal of the Native Plant Society of Oregon, ©2009

EDITOR: Cindy Roché, PhD

EDITORIAL BOARD: Frank A. Lang, PhD, Susan Kephart, PhD, Rhoda M. Love, PhD



Upper left: No abscission layer forms between a gray pine cone and its peduncle, so cones not cut by squirrels remain on the tree until weathering off. No squirrels have found this tree in Central Point that was grown from seed collected by Ivan Skeyrman near Blackwell Hill. The accumulation of cones for 16 years may weigh 100 lbs. on a branch, even more during winter when wet! Photo by Frank Callahan.

Upper right: The female spikelets (particularly the lowest ones) of *Carex limosa* usually dangle in this inverted position. Photo by Bruce Newhouse.

Lower left: North slope of Fairview Mountain, the site of William Baker's doctoral research, photographed in August 2008 by Rhoda Love.

Cover Photo: Cone of gray pine (*Pinus sabiniana*). Photo by Robert Korfhage, March 2009.

KALMIOPSIS: ISSN 1055-419X. Volume 16, 2009. Published annually. Subscription \$18 per year.

Native Plant Society of Oregon • General business address: PO Box 902, Eugene, OR 97440-0902 • NPSO Website: <http://www.NPSOregon.org>

NATIVE PLANT SOCIETY OF OREGON

STATE OFFICERS

DIRECTORS (TO 6/11) ...Celeste Coulter, Dan Luoma, Billy Don Robinson
DIRECTORS (TO 6/10) Sam Friedman, Laurel Moulton, Judi Sanders
PRESIDENT David Lebo
IMMEDIATE PAST PRESIDENT Kelli Van Norman
VICE PRESIDENT Dan Luoma
SECRETARY David Barts
TREASURER Cyndi Dion

STATE COMMITTEE CHAIRS

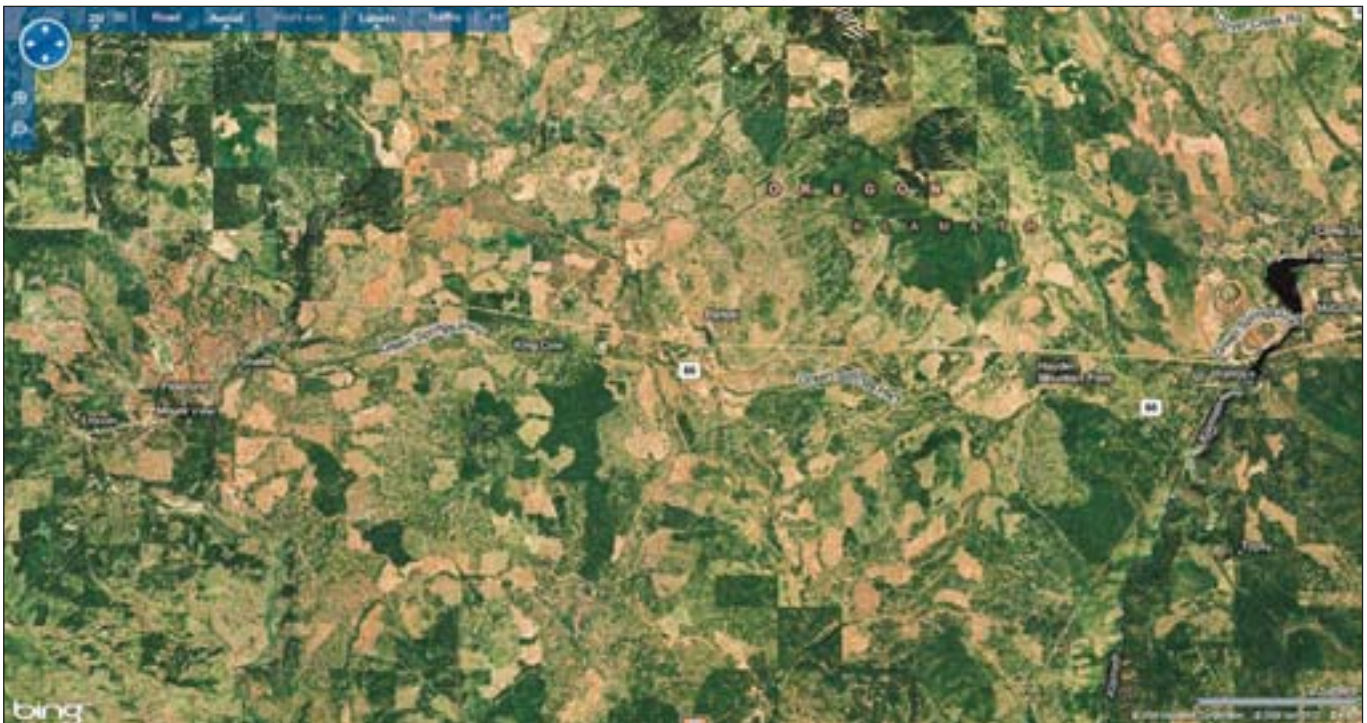
BUDGETS AND GRANTS Dan Luoma
CONSERVATION, EAST SIDE Duncan Thomas
CONSERVATION, WEST SIDE David Lebo
FRIENDS OF OR FLORA PROJECT Linda Hardison
LEGISLATIVE Les Helgeson
MEMBERSHIP Clayton Gautier
RARE & ENDANGERED PLANTS Les Gottlieb

CHAPTER PRESIDENTS

BLUE MOUNTAIN (PENDLETON) Jerry Baker
CHEAHMILL Susan Aldrich-Markham
CORVALLIS Laurel Moulton
EMERALD (EUGENE) Brian Basor
HIGH DESERT (BEND) Eileen Obermiller
KLAMATH BASIN Sarah Malaby
MID-COLUMBIA Sara Wu
NORTH COAST Janet Stahl
PORTLAND Don Jacobson
SISKIYOU Cindy Roché
UMPQUA VALLEY (ROSEBURG) Donna Rawson
WILLAMETTE VALLEY (SALEM) John Savage
WMCUSICK (LAGRANDE) Jennifer Ferriell

PUBLICATIONS

BULLETIN EDITOR/PRODUCER Fran Gardner/Jocelyn Duffy
KALMIOPSIS EDITOR Cindy Roché



In this satellite view (©2009 Microsoft Corporation bing™) of the Pokegama Plateau, federally owned lands appear dark green (i.e., forested) compared to most of the private land, which is a light green or brown. The stripe across the middle is a powerline right-of-way that lies just north of Highway 66 (called the Green Springs Highway on the image).

MEMBERSHIP

Membership in the Native Plant Society of Oregon is open to all.

Membership applications, renewals, and changes of address (include old address and zip code) should be sent to the NPSO Membership Chair, Clayton Gautier, 3927 Shasta View St., Eugene OR 97405-4442.

Student \$12; Regular \$18; Family \$24; Sustaining \$50; Patron \$100; Life Member \$500; Subscription Only (Bulletin and Kalmiopsis) \$18

CONTACT INFORMATION

KALMIOPSIS EDITOR: Cindy Roché, P.O. Box 808, Talent, OR 97540-0808, kalmiopsis@NPSOregon.org
BULLETIN EDITOR: Fran Gardner/Jocelyn Duffy, bulletin@NPSOregon.org
MEMBERSHIP CHAIR: Clayton Gautier, 3927 Shasta View St., Eugene, OR 97405-4442, membership@NPSOregon.org
WEBMASTER: Norm Jensen, webmaster@NPSOregon.org
EMAIL DISCUSSION LIST LOGIN: See NPSO website, select subscribe to list under membership.
WEBSITE: <http://www.NPSOregon.org>

The opinions expressed by the authors do not necessarily reflect those of the Native Plant Society of Oregon.

ACKNOWLEDGEMENTS

KALMIOPSIS LOGO: Linda Ann Vorobik (VorobikBotanicalArt.com) PAGESSETTING: Fassler Graphics, Ashland



Editor with proofs and red pen at Sky Lakes Wilderness. Photo by R. Korfhage, submitted by Fassler Graphics

Kalmiopsis
Native Plant Society of Oregon
Clayton Gautier, Membership Chair
3927 Shasta View St
Eugene OR 97405-4442

NONPROFIT ORG
US POSTAGE
PAID
MEDFORD OR
Permit No. 125



~ **Native Plant Society of Oregon** ~
*Dedicated to the enjoyment, conservation, and study of
Oregon's native plants and habitats.*



TABLE OF CONTENTS

**Discovering Gray Pine
(*Pinus sabiniana*)
in Oregon 1**
By Frank Callahan



**Oregon Plants,
Oregon Places:
The Pokegama
Plateau 21**
By Connie Battaile



**Plant of the Year:
Dangly Fen Sedge
(*Carex limosa* L.).... 15**
By Bruce Newhouse



**Botanist William H. Baker
(1911-1985): Captivated
by Isolated Floras 31**
By Rhoda M. Love

Book Reviews 36

NPSO Fellow 40